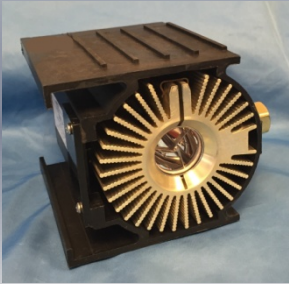




***Medical Replacement Lamp Modules,
Lamps & Headlight cables***

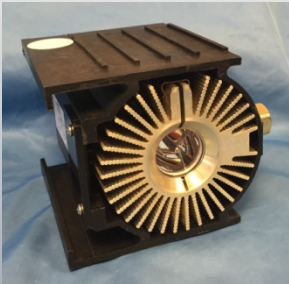
Medical Replacement Lamp Modules



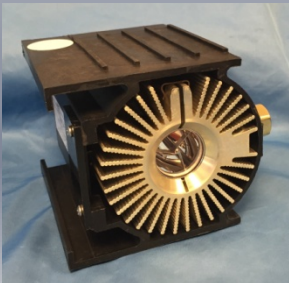
P/N

Description

SSX0300 TITANX300 ELLIPTICAL C-BODY LAMP MODULE



SSX0350 TITANX350 ELLIPTICAL C-BODY LAMP MODULE



SSX0450 TITANX450 ELLIPTICAL C-BODY LAMP MODULE

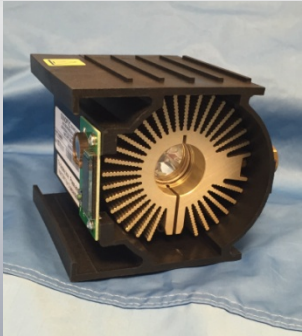
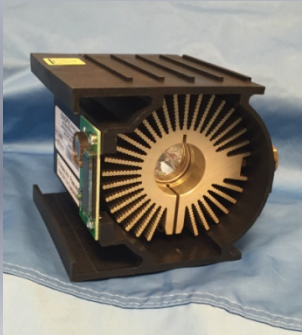
Medical Replacement Lamp Modules

P/N

Description

SSX0035 TITAN300 LAMP MODULE

SSX0040 TITAN400 LAMP MODULE



Medical Replacement Lamp Modules



P/N

Description

SSX1401

Replacement Luxtec Lamp Drawer 9300



SSX1402

Replacement Luxtec Lamp Drawer 9175



SSX1752

Replacement Module for Linvatec 300w

Medical Replacement Lamp Modules

P/N

Description



SSX1739

Replacement Module for Luxtec 9300XSP



SSX1585

Replacement Module for Leica M720F60



SSX1446

Module for Applied FiberOptics' Sunbeam

Medical Replacement Lamp Modules

P/N

Description



SSX1681 **Replacement Module for Pro-Xenon Welch
Allyn 90209 and Moeller-Wedel FS2-23**



SSX1428 **Module for BFW with IR filter**

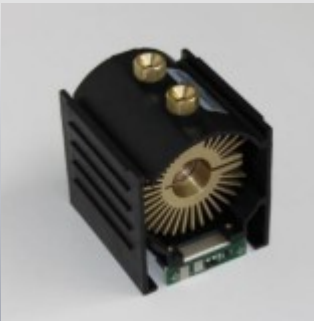
Medical Replacement Lamp Modules

P/N

Description



SSX1407 Replacement Module for Smith & Nephew



SSX1710 Replacement Module for Smith & Nephew
500XL (timer board not included, end user to
re-use existing board)



SSX1177 Richard Wolf 125w Lamp & Module

Medical Replacement Lamp Modules

P/N

Description



SSX1287 Replacement Module for Stryker X6000



SSX1426 Luxtel 300w Module with timer

- Leica OH5, OH4, OH3, OHS1, MS3, MS2, MS1, F40; M525F20
- Linvatec/ConMed 8430, 8180, 8170
- Zeiss Superlux 300, Superlux 301 (with timer)
- Steris 3010



SSX1571 Replacement Lamp for Stryker 7000

Medical Replacement Lamp Modules

P/N

Description



SSX1567 Replacement Module for Stryker X8000



SSX1429 Luxtel 175BF Lamp & Timer



**SSX1336 Replacement for Smith & Nephew part #
660-0024, Y1616**

Medical Replacement Lamp Modules

P/N

Description



SSX1339 Luxtel Standard Lamp Module w/175w Lamp



SSX1338 Luxtel Lamp without timer



SSX1521 Luxtel Lamp

Medical Replacement Lamps

P/N

Description



SSX1854 Replacement lamp for Olympus CLV190



SSX1576 Replacement Lamp for Pentax EPK-i, Y1882



SSX1583 Replacement Lamp for ACMI- Gyrus

Medical Replacement Lamps



P/N

Description

SSX1582

Replacement Lamp for (Newer) Da Vinci



SSX1579

**Replacement Lamp for Linvatec and Applied
FiberOptics**



SS X1495 Replacement lamp for Stryker X8000

Medical Replacement Lamps

P/N

Description



SSX1492 Replacement lamp for Stryker X7000



SSX300BF-10F Replacement Lamp for (Older) Da Vinci

Medical Replacement Lamps

P/N

Description



SSX1130 CL150AF Replacement Lamp for Fujinon EPX2200



**SSX300BF with Digital Timer - Replacement lamp for
Olympus, Fujinon**



SSX1846 Replacement Lamp for Olympus CLV180

Medical Replacement Lamps



P/N

Description

SSX300BF Replacement lamp for Olympus, Storz



SSX175BF Replacement lamp for Olympus, Storz

Replacement Headlight Cables



P/N

Description

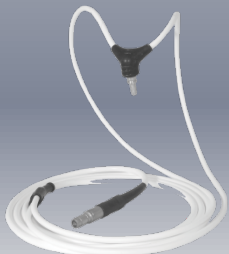
SU-0080

**Sunoptic Ultra-Grip Headlight Cable
for use with TITAN Lightsources**



SU-0097

**Sunoptic Ultra-Grip Headlight Cable
for use with LED Lightsources**



SU-2900-WS

INTEGRA\LUXTEC 00-2900 Headlight cable